

CLASSICI NO. 21

FILATI

Design 16

CARDIGAN



## CARDIGAN

**Size** 36/38 (40/42, 44) Instructions are given for first size. Figures in parenthesis refer to larger sizes. When only one figure is given, it applies to all sizes.

**Materials:** 900 (950, 1000) g of Lana Grossa **Alta Moda Alpaca** (90% baby alpaca, 5% Merino wool, 5% polyamide; 140 m/50 g) in Off White (**col 14**). Size 3, 4 and 5 mm needles; size 3 mm circular needle, 40 cm long; size 3 mm circular needle, 80 cm long; size 3.5 mm crochet hook; eight 20 mm buttons in off white.

**Rib patt:** P1, k1.

**St st:** K on RS, p on WS.

**Half-brioche rib:** Multiple of 2 + 1 + 2 selvage sts. Work according to chart. Numbers at right edge of chart indicate RS rows, numbers at left edge of chart indicate WS rows. Work rows 1 – 4 once, then rep rows 3 and 4. Note: 1 stitch and 1 yo are treated as 1 stitch.

**Selvage sts:** On every row: Knit first and last st.

**Full-fashion dbl decrease:** At beg of RS row, selvage st, 5 sts in half-brioche rib, sk2p; at end of RS row, work to last 9 sts, k3tog, 5 sts in half-brioche rib, selvage st.

**Full-fashion dbl increase:** At beg of RS row, selvage st, 6 sts in half-brioche rib, [k1, p1tbl, k1] in next st; at end of RS row, work to last 8 sts, [k1, p1tbl, k1] in next st, 6 sts in half-brioche rib, selvage st.

**Gauge:** 22 sts and 42 rows = 10 x 10 cm in half-brioche rib on size 4 mm needles.

**Back:** With size 3 mm needles cast on 139 (147, 155) sts. Next row (WS): Selvage st, \* k1, p1; rep from \* to last 2 sts, k1, selvage st. Work in rib patt as set by last row until piece meas 7 cm from cast-on, ending with a WS row. Change to size 4 mm needles. Next row (RS): Work row 1 of chart = work to patt rep, work 2 sts between arrows for patt rep, work to end of chart. Cont to foll chart until piece meas 36 cm from cast-on, ending with a WS row. Shape armholes: Working full-fashion dbl inc, inc 2 sts at each end of next RS row, then every 20th (22nd, 24th) row 3 times = 155 (163, 171) sts. Work even until armhole meas 18 (19, 20) cm, ending with a WS row. Shape shoulders and neck: At each shoulder edge bind off 4 (4, 5) sts 1 time, then [4 sts 1 time, 5 sts 1 time] 6 times (then 4 sts 2 times, 5 sts 10 times / then 5 sts 11 times, 6 sts 1 time). At same time, when piece meas 4 cm from beg of shoulder shaping, shape neck as foll: Next row (RS): Bind off center 19 sts. Working each side separately, bind off 4 sts at each neck edge 1 time, 3 sts 2 times. No sts rem.

**Left front:** With size 3 mm needles cast on 64 (68, 72) sts. Next row (WS): Selvage st, \* k1, p1; rep from \*, end selvage st. Work in rib patt as set by last row until piece meas 7 cm from cast-

on, ending with a WS row. Change to size 4 mm needles. Next row (RS): Work row 1 of chart = work first chart st = selvage st, work 2 sts between arrows for patt rep, work to end of chart. Cont to foll chart until piece meas 12 cm from cast-on, ending with a WS row. Next RS (pocket opening) row: Patt over first 26 (28, 30) sts and turn, leaving rem 38 (40, 42) sts on hold. Next row (WS): Cast on 1 st (work as selvage st throughout), patt to end = 27 (29, 31) sts. Cont in patt over these 27 (29, 31) sts for 18 cm, ending with a RS row. Place sts on holder, cut yarn. Return 38 (40, 42) held sts to needle and with RS facing, rejoin yarn. Next row (RS): Cast on 1 st (work as selvage st throughout), patt to end = 39 (41, 43) sts. Cont in patt over these 39 (41, 43) sts for 18 cm, ending with a RS row. Next row (WS): Patt over 39 (41, 43) sts on needle and 27 (29, 31) sts on holder and at same time, ktog last 2 sts on needle and first 2 sts on holder = 64 (68, 72) sts. Cont in patt across all sts until same length as back to armhole. Shape armhole at right edge same as for back = 72 (76, 80) sts. Cont in patt until piece meas 53 (54, 55) cm from cast-on, ending with a WS row. Shape neck: Working full-fashion dbl dec, dec 2 sts at end of next 7 RS rows and when same length as back to shoulder, shape shoulder at right edge same as for back. No sts rem.

**Right front:** Work same as left front, reversing all shaping and patt placement.

**Sleeves:** With size 3 mm needles cast on 81 (85, 89) sts. Next row (WS): Selvage st, \* k1, p1; rep from \* to last 2 sts, k1, selvage st. Work in rib patt as set by last row until piece meas 7 cm from cast-on, ending with a WS row. Change to size 4 mm needles. Next row (RS): Work row 1 of chart = work to patt rep, work 2 sts between arrows for patt rep, work to end of chart. Cont to foll chart until piece meas 43 cm from cast-on. Bind off all sts.

**Pocket lining:** Make 2. With size 5 mm needles cast on 38 (40, 42) sts. Work in St st for 23 cm. Bind off all sts.

**Finishing:** Pin pieces to measurements and block. Sew shoulder seams. Collar: With shorter size 3 mm circular needle, pick up and k 87 sts evenly along right front, back and left front neck edge. Next row (WS): Selvage st, \* k1, p1; rep from \* to last 2 sts, k1, selvage st. Work in rib patt as set by last row until collar meas 20 cm from pick-up row. Bind off all sts in rib. Button band: With longer size 3 mm circular needle and RS facing, beg 10 cm down from top edge of collar, pick up and k 191 (195, 199) sts evenly along left front edge. Next row (WS): Selvage st, \* k1, p1; rep from \* to last 2 sts, k1, selvage st. Work in rib patt as set by last row band meas 4 cm. Bind off all sts in rib. Buttonhole band: With longer size 3 mm circular needle and RS facing, pick up and k 191 (195, 199) sts evenly along right front edge, ending 10 cm down from top edge of collar. Work same as button band and at same time, when band meas 2 cm, work 8 buttonholes on next RS row, with bottom buttonhole 3 (2, 2) cm up from lower edge, 2nd buttonhole spaced 5 cm apart, 3rd – 6th buttonhole spaced 10.5 (11, 11.5) cm apart and 7th and 8th buttonhole spaced 5

### CARDIGAN

cm apart. For each buttonhole, bind off 3 sts. On foll WS row, cast on 3 sts over each set of bound-off sts. Fold collar in half to WS and sew down. With size 3.5 mm crochet hook, work 1 row sl st along pick-up row of front bands. Pocket trim: With size 3 mm needles and RS facing, pick up and k 55 sts evenly along pocket opening between A and B on schematic. Next row (WS): Selvage st, \* p1, k1; rep from \* to last 2 sts, p1, selva-ge st. Work in rib patt as set by last row until trim meas 3 cm. Bind off all sts in rib. Sew pocket lining in place on WS: sew left side edge of lining along pick-up row of front band, right side edge along edge opposite pocket opening, cast-on edge 7 cm up from bottom edge of front and boundoff edge 30 cm up from bottom edge of front. Sew on sleeves. Sew side and sleeve seams. Sew on buttons.

Chart

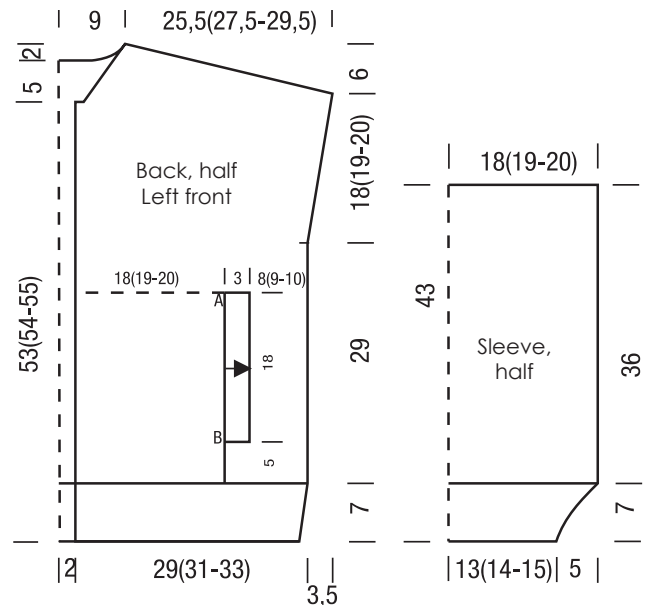
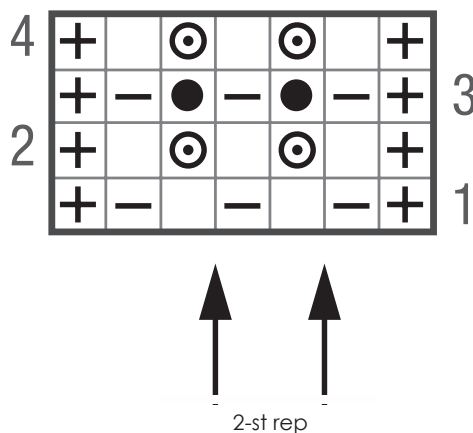


Chart key:

- ⊕ = selvage st
- ⊖ = k1
- ⊖ = p1
- ⊙ = make a yo, then sl next st pwise
- = ktog slipped st with its yo

## GAUGE SWATCH

Before you begin knitting...

...make a gauge swatch. Use the recommended needles, yarns and pattern stitch for your gauge swatch. It should measure approx. 12 cm x 12 cm. Cast on and bind off rows, as well as selvage stitches should not be included in the measurement. Pin your swatch and block it as you would the finished pieces of the garment. Count stitches and rows over 10 cm. If your gauge swatch is too small, switch to larger needles. If your gauge swatch is too big, switch to smaller needles.

## ABBREVIATIONS

**beg** = begin(ning) · **ch** = chain · **cont** = continue · **dec** = decreas(e)(ing) · **inc** = increas(e)(ing) · **k** = knit · **kwise** = as if to knit · **meas** = measures · **M1L** = lift strand between sts from front to back and knit this strand through the back loop · **M1R** = lift strand between sts from the back and knit this strand through the front loop · **patt** = pattern · **pm** = place marker · **p** = purl · **pwise** = as if to purl · **rem** = remain(ing) · **rep** = repeat(s) · **rev St st** = reverse stockinette stitch · **rnd(s)** = round(s) · **RS** = right side · **sc** = single crochet · **skp** = slip 1 stitch as if to knit, knit 1 stitch, pass slipped stitch over knitted stitch · **sk2p** = slip 1 stitch as if to knit, knit 2 together, pass slipped stitch over knitted stitch · **s2kp** = slip 2 stitches as if to knit, k 1 stitch, pass slipped stitches over knitted stitch · **sl** = slip · **st(s)** = stitch(es) · **St st** = stockinette stitch · **tbl** = through the back loop · **tog** = together · **wyib** = with yarn in back of work · **wyif** = with yarn in front of work · **WS** = wrong side · **yo(s)** = yarn over(s)