

FILATI NO. 62

FILATI

Design 46

PULLOVER



### PULLOVER

**Size** 36 – 40 (42 – 46) Instructions are given for smaller size. Figure in parenthesis refers to larger size. When only one figure is given, it applies to both sizes.

**Materials:** 500 (550) g of Lana Grossa **Brigitte No. 2** (47% baby alpaca, 45% cotton, 8% Merino wool; 140 m/50 g) in Off White (col 16). Size 6 and 6.5 mm needles; size 6 mm circular needle, 50 cm long; cable needle [cn].

**Selvage stitches:** On every row: Sl first st kwise, k last st.

**Chart A:** Number at left edge of chart indicates WS row, number at right edge of chart indicates RS row. Chart begins with a WS row. Position sts as given in instructions. Rep rows 1 and 2.

**Chart B:** Numbers at right edge of chart indicate RS rows; on WS rows, work sts as they appear or according to chart key. Position sts as given in instructions. Rep rows 1 – 8.

**Full-fashion decrease:** At beg of RS row, selvage st, work sts shown in grey on chart B = work first st, work 2nd and 3rd st twice, = 5 sts, k2tog; at end of RS row, work to last 8 sts, skp, work sts shown in grey on chart B = work first st, work 2nd and 3rd st twice = 5 sts, selvage st.

**Gauges:** On size 6.5 mm needles: 21.5 sts and 26 rows = 10 x 10 cm in chart patt A; 17 sts and 26 rows = 10 x 10 cm in chart patt B.

**Back:** With size 6 mm needles cast on 108 (116) sts. Next row (WS): Work row 1 of chart A = work first chart st, work 5 (9) sts before patt rep, work sts between arrows for patt rep, end with 3 (7) sts after patt rep and last chart st. Cont to foll chart A until a total of 11 rows = 4 cm has been worked from cast-on, decreasing 2 sts on last WS row = 106 (114) sts. Change to size 6.5 mm needles. Next row (RS): Work row 1 of chart B

= work first chart st, work 11 (15) sts before patt rep [for larger size, work first 4 sts twice], work 82 sts between arrows for patt rep, end with 11 (15) sts [for larger size, work last 4 sts twice] after patt rep and last chart st. Cont to foll chart B for a total of 74 rows = 28 cm. Shape raglan: Bind off 3 sts at beg of next 2 rows. Working full-fashion dec, dec 1 st at each end of next 36 (40) RS rows = 28 sts and when raglan meas 29 (32) cm, bind off all sts.

**Front:** Work same as back.

**Sleeves:** With size 6 mm needles cast on 52 sts. Next row (WS): Work row 1 of chart A = work first chart st, work 5 sts before patt rep, work sts between arrows for patt rep, end with 3 sts after patt rep and last chart st. Cont to foll chart A until a total of 11 rows = 4 cm has been worked from cast-on. Change to size 6.5 mm needles. Next row (RS): Work row 1 of chart B = work first chart st, work 50 sts between double arrows, end with last chart st. Cont to foll chart B and shape sleeve as foll: Inc 1 st at each end of 7th (3rd) row worked in chart patt B, then every 6th row 5 (0) times, then every 4th row 13 (22) times = 90 (98) sts. Work increased sts into patt. Cont to foll chart B until a total of 96 rows = 37 cm has been worked according to chart B. Shape sleeve cap: Bind off 3 sts at beg of next 2 rows. Working full-fashion dec, dec 1 st at each end of next 34 (38) RS rows = 16 sts and when sleeve cap meas 29 (32) cm, bind off all sts.

**Finishing:** Pin pieces to measurements and block. With mattress st and from RS, sew raglan, side and sleeve seams, sewing 1 st in from edge. Turtleneck: With size 6 mm circular needle, pick up and k 91 sts evenly around neck edge. Place beg of rnd marker, join for working in rnds and work chart patt A: Rnd 1: Work row 1 patt rep around. Rnd 2: Work sts as they appear. Rep rnds 1 and 2 until turtleneck meas 7 cm from pick-up rnd. Turn work and with WS facing, cont working rnds 1 and 2 for 13 cm. Loosely bind off all sts in patt. Fold turtleneck to outside.

## GAUGE SWATCH

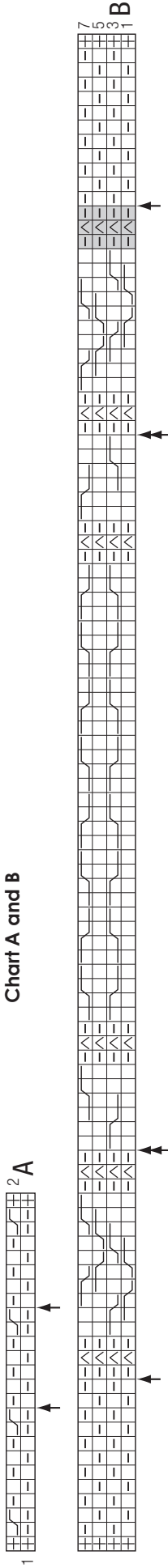
Before you begin knitting...

...make a gauge swatch. Use the recommended needles, yarns and pattern stitch for your gauge swatch. It should measure approx. 12 cm x 12 cm. Cast on and bind off rows, as well as selvage stitches should not be included in the measurement. Pin your swatch and block it as you would the finished pieces of the garment. Count stitches and rows over 10 cm. If your gauge swatch is too small, switch to larger needles. If your gauge swatch is too big, switch to smaller needles.

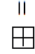
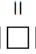
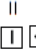

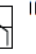




## ABBREVIATIONS

**beg** = begin(ning) · **ch** = chain · **cont** = continue · **dec** = decreas(e)(ing) · **inc** = increas(e)(ing) · **k** = knit · **kwise** = as if to knit · **meas** = measures · **M1L** = lift strand between sts from front to back and knit this strand through the back loop · **M1R** = lift strand between sts from the back and knit this strand through the front loop · **patt** = pattern · **pm** = place marker · **p** = purl · **pwise** = as if to purl · **rem** = remain(ing) · **rep** = repeat(s) · **rev St st** = reverse stockinette stitch · **rnd(s)** = round(s) · **RS** = right side · **sc** = single crochet · **skp** = slip 1 stitch as if to knit, knit 1 stitch, pass slipped stitch over knitted stitch · **sk2p** = slip 1 stitch as if to knit, knit 2 together, pass slipped stitch over knitted stitch · **s2kp** = slip 2 stitches as if to knit, k 1 stitch, pass slipped stitches over knitted stitch · **sl** = slip · **st(s)** = stitch(es) · **St st** = stockinette stitch · **tbl** = through the back loop · **tog** = together · **wyib** = with yarn in back of work · **wyif** = with yarn in front of work · **WS** = wrong side · **yo(s)** = yarn over(s)

Chart A and B



**Chart key:**

-  = salvage st
-  = k1
-  = p1
-  = sl 1 pwise wyib on RS, p1 on WS
-  = k 2nd st on left needle, k 1st st on left needle, sl both sts to right needle
-  = sl 2 sts to cn and hold in front of work, k1, then k2 from cn
-  = sl 1 st to cn and hold in back of work, k2, then k1 from cn
-  = sl 2 sts to cn and hold in front of work, k2, then k2 from cn
-  = sl 2 sts to cn and hold in back of work, k2, then k2 from cn

