

LANA GROSSA



© Lana Grossa GmbH

Design 28 – Linea Pura 16

VEST
SOLO LINO

VEST · SOLO LINO

Design 28 – Linea Pura 16



Size One size

Materials: 350 g of Lana Grossa **Solo Lino** (80% recycled linen [viscose], 20% linen; 120 m/50 g) in Nougat (**col 54**). Size 3.5 mm needles; size 4 mm crochet hook; six 15 mm mother-of-pearl buttons in natural.

Selvage stitches: On every row: Sl first st kwise, k last st.

Charts A, B, C: Numbers at left edge of charts indicate WS rows, numbers at right edge of charts indicate RS rows. On all WS rows not shown on charts work sts as they appear, purl all yos. Work to patt rep, work 10 sts between arrows for patt rep, work to end of chart. For **back**, work rows 1 – 99 of chart A once, then rep rows 54 – 99. For **left front**, work rows 1 – 99 of chart B once, then rep rows 54 – 99. For **right front**, work rows 1 – 71 of chart B once, work rows 72 – 99 of chart C once, then rep rows 54 – 99 of appropriate chart.

Collar: Work according to crochet chart. Numbers at right and left edge of chart indicate rows. Beg rows with ch 2 (counts as sc and/or hdc) or ch 3 (counts as dc). Work to patt rep, work patt rep 11 times, work to end of chart. Work rows 1 – 10 once.

Gauge: 21.5 sts and 31 rows = 10 x 10 cm in chart patt on size 3.5 mm needles.

Back: With size 3.5 mm needles cast on 123 sts. Beg and end with a WS row work chart A for 81 rows = 26 cm, working patt rep 10 times across row. Place marker in first and last st on last WS row to indicate beg of armholes. Cont for 56 rows and piece meas 18 cm from armhole markers. Shape shoulders: At each shoulder edge bind off 7 sts 1 time, 6 sts 6 times. Bind off rem 37 sts.

Left front: With size 3.5 mm needles cast on 59 sts. Beg and end with a WS row work chart B for 81 rows = 26 cm, working patt rep 4 times across row. Place marker in last st on last WS row to indicate beg of armhole. Cont until a total of 126 rows = 41 cm has been worked from cast-on, ending with a RS row. Shape neck and shoulder: At beg of WS rows bind off 5 sts 1 time, 3 sts 2 times, 2 sts 1 time, 1 st 3 times and when same length as back to shoulder, shape shoulder at right edge same as for back. No sts rem.

Right front: Work same as left front, reversing all shaping.

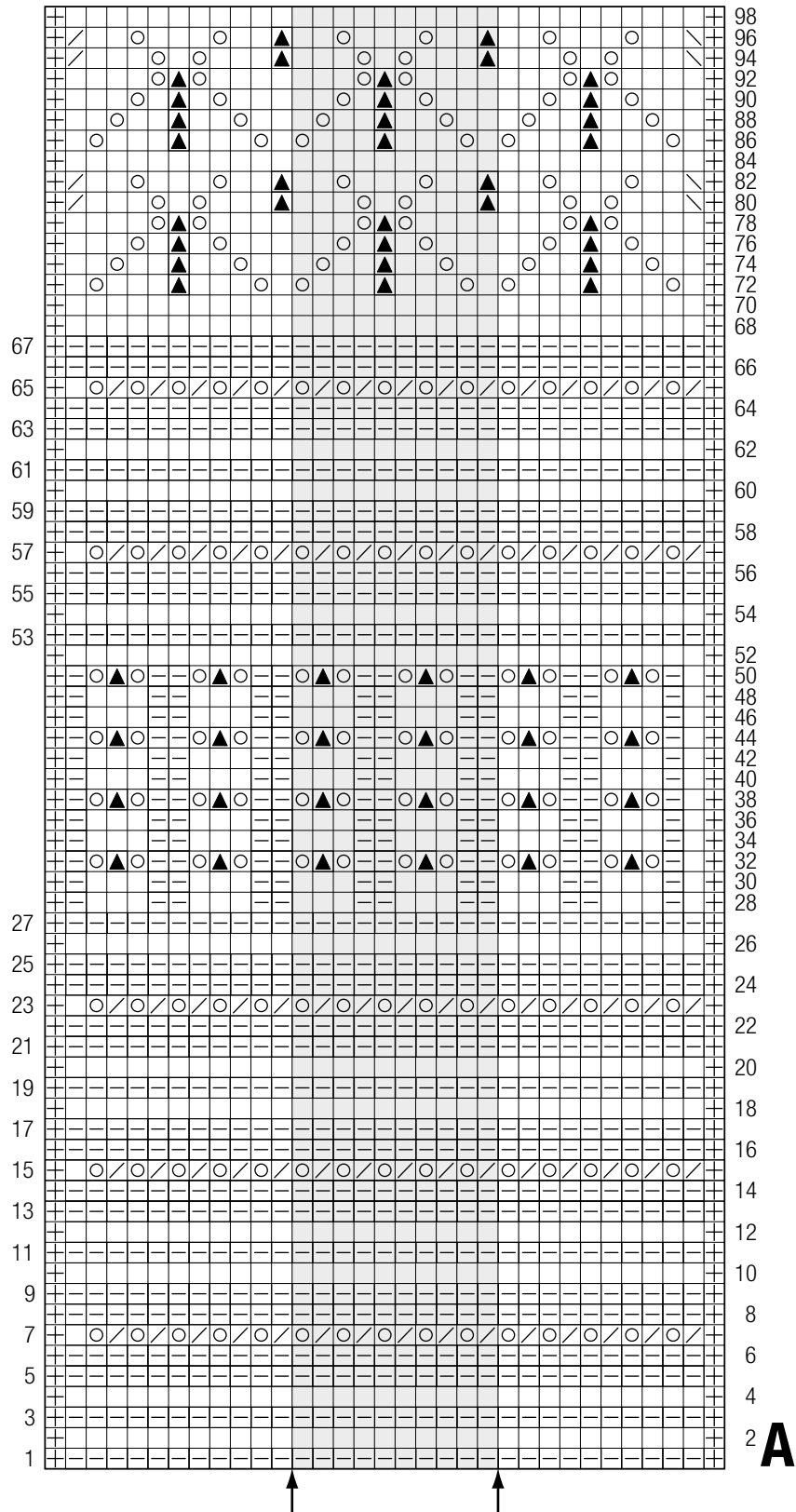
Finishing: Pin pieces to measurements and block. Sew shoulder and side seams. **Armhole bands:** With size 4 mm crochet hook work 7 rnds sc, 66 sc for every rnd [see photo 1]. **Left front button band:** With size 4 mm crochet hook work 7 rows sc, 76 sc for every row. **Right front buttonhole band:** Work same as left front band and at same time, on 4th row, work 6 buttonholes as foll: Sc in next 2 sc, ch 2, sk next 2 sc, [sc in next 12 sc, ch 2, sk next 2 sc] 5 times, sc in next 2 sc. On foll row, work 2 sc into each of ch-2 sps. **Collar:** With size 4 mm crochet hook, RS facing, beg at center of right front band and end at center of left front band, work rows 1 – 10 of crochet chart, working 79 sc along right front, back and left front neck edge on row 1 [see photo 2]. Sew on buttons.

VEST · SOLO LINO

Design 28 – Linea Pura 16



Chart A

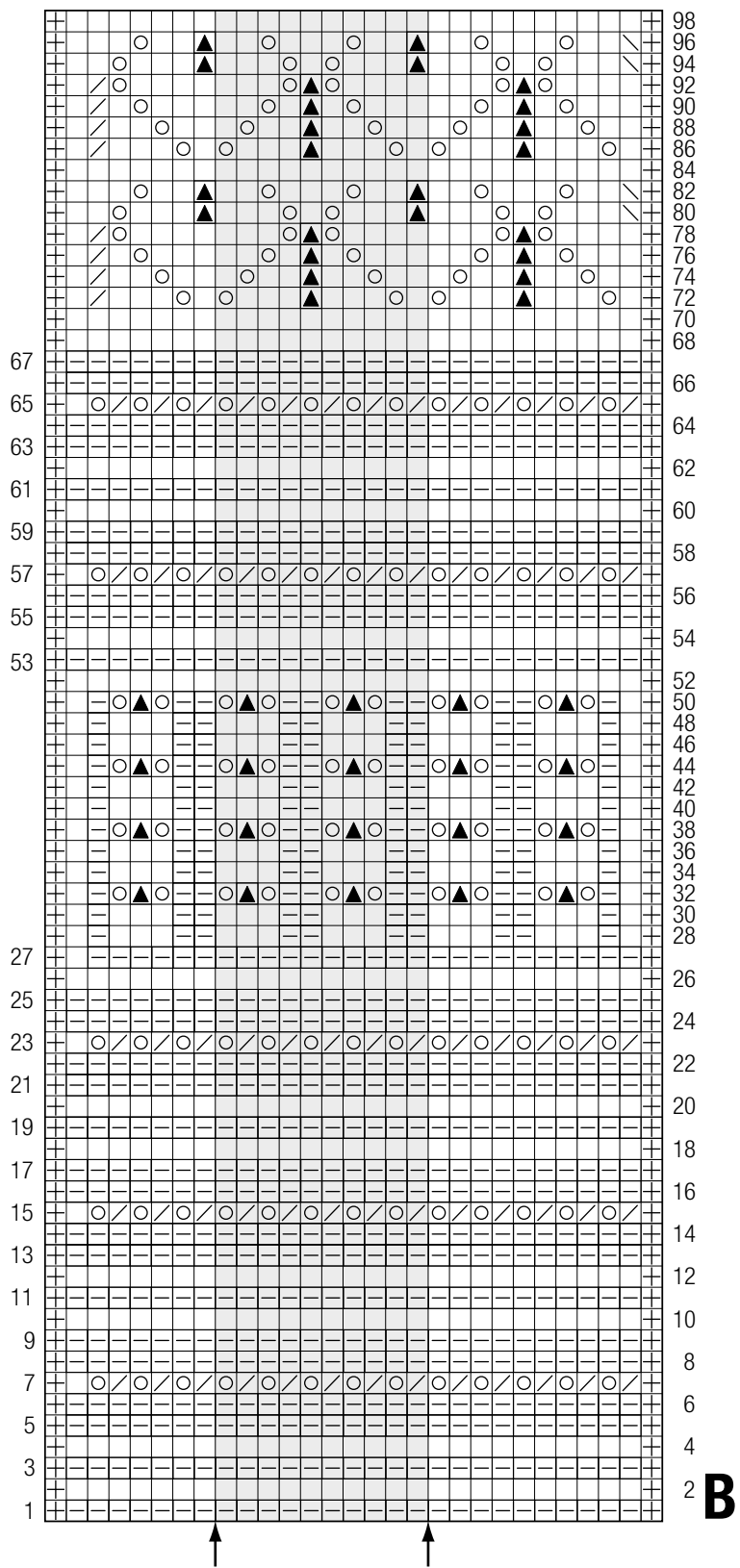


VEST · SOLO LINO

Design 28 – Linea Pura 16



Chart B



VEST · SOLO LINO

Design 28 – Linea Pura 16



Chart C

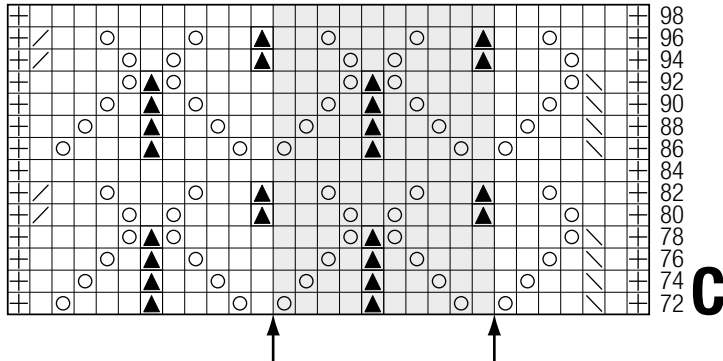


Chart key:

- ☒ = selvage st
- = k1
- ◻ = p1
- = yo
- ▧ = k2tog
- ◻ = skp: sl 1 kwise, k1, pass slipped st over knitted st
- ▲ = s2kp: sl 2 kwise, k1, pass slipped sts over knitted st

Chart

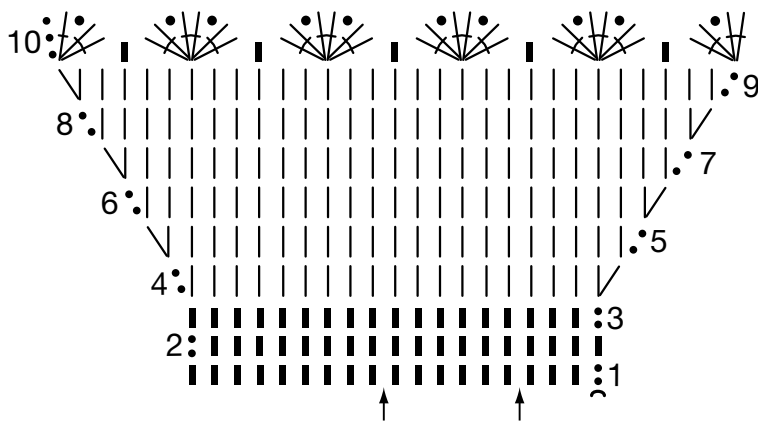
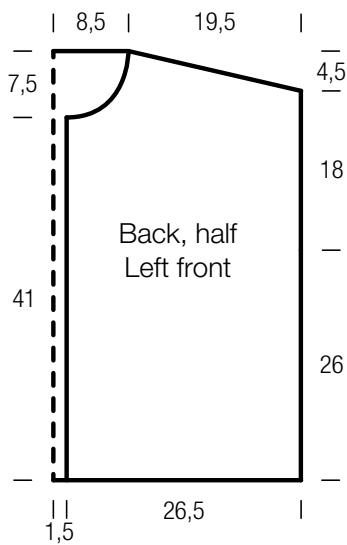
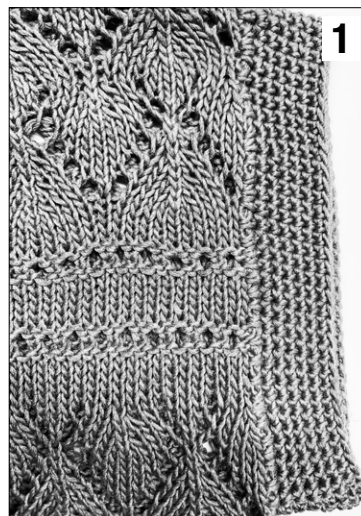


Chart key:

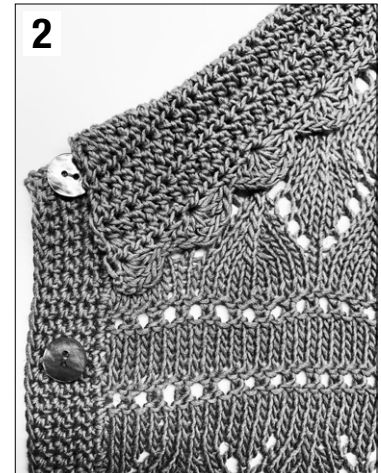
- = chain (ch)
- ⋈ = slip stitch (sl st)
- ┆ = single crochet (sc)
- ┆ = half double crochet (hdc)
- ∨ = 2 hdc in same st and/or sp
- ⋈ = [1 dc, ch 1, 2 dc] in same st and/or sp
- ⋈ = [2 dc, ch 1, 2 dc] in same st and/or sp
- ⋈ = [2 dc, ch 1, 2 dc, ch 1, 2 dc] in same st and/or sp



Armhole bands



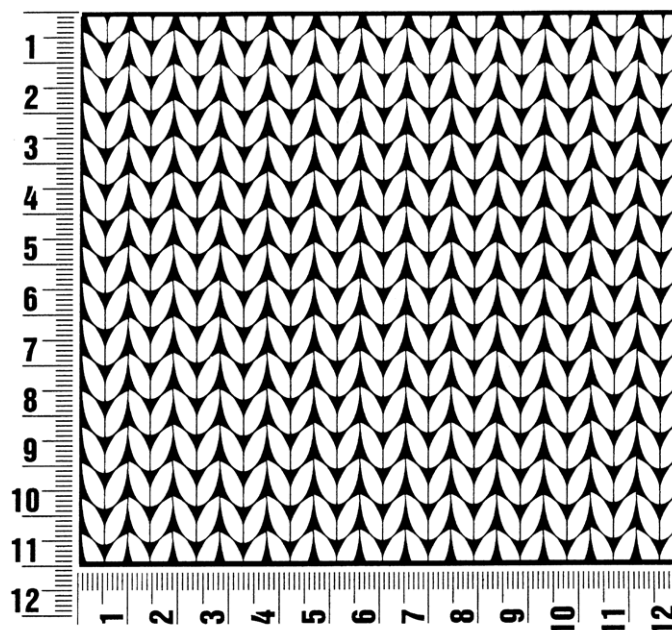
Crochet collar



Gauge Swatch

Before you begin ...

...make a gauge swatch. Use the recommended needles, yarns and pattern stitch for your gauge swatch. It should measure approx. 12 cm x 12 cm. Cast-on and bind-off rows, as well as selvage stitches should not be included in the measurement. Pin your swatch and block it as you would the finished pieces of the garment. Count stitches and rows over 10 cm. If your gauge swatch is too small, switch to larger needles. If your gauge swatch is too big, switch to smaller needles.



Abbreviations

beg = begin(ning) · **ch** = chain · **cont** = continue · **dec** = decreas(e)(ing) · **inc** = increas(e)(ing) · **k** = knit · **kwise** = as if to knit
meas = measures · **M1L** = lift strand between sts from front to back and knit this strand through the back loop · **M1R** = lift strand between sts from the back and knit this strand through the front loop · **patt** = pattern · **pm** = place marker · **p** = purl
pwise = as if to purl · **rem** = remain(ing) · **rep** = repeat(s) · **rev St st** = reverse stockinette stitch · **rnd(s)** = round(s) · **RS** = right side · **sc** = single crochet · **skp** = slip 1 stitch as if to knit, knit 1 stitch, pass slipped stitch over knitted stitch · **sk2p** = slip 1 stitch as if to knit, knit 2 together, pass slipped stitch over knitted stitch · **s2kp** = slip 2 stitches as if to knit, k 1 stitch, pass slipped stitches over knitted stitch · **sl** = slip · **st(s)** = stitch(es) · **St st** = stockinette stitch · **tbl** = through the back loop · **tog** = together · **wyib** = with yarn in back of work · **wyif** = with yarn in front of work · **WS** = wrong side · **yo(s)** = yarn over(s)

Publisher's Info

Publisher: Lana Grossa GmbH, Gaimersheim, www.lana-grossa.com

Photographer: Yannick Schuette